

Ceiling Fan Support

2020 NEC Changes



COMMERCIAL CONSTRUCTION



2020 NEC Article 314.27 (C)

...Outlet boxes mounted in the ceilings of habitable rooms of dwelling occupancies in a location acceptable for the installation of a ceiling – suspended (paddle) fan shall comply with one of the following:

- Listed for the sole support of ceiling – suspended (paddle) fans.
- An outlet box complying with the applicable requirements of 314.27 and providing access to structural framing capable of supporting of a ceiling – suspended (paddle) fan bracket or equivalent.



COMMERCIAL CONSTRUCTION



Definitions / Scope

- *Dwelling Units*
 - Residential – Single & Multiple Dwellings
- *Habitable areas*
 - Bed Rooms
 - Family Rooms
 - Dining Rooms
 - Entryways
- *Where a fan can be installed*
 - Areas physically large enough
 - Excludes outlets in closets or hallways



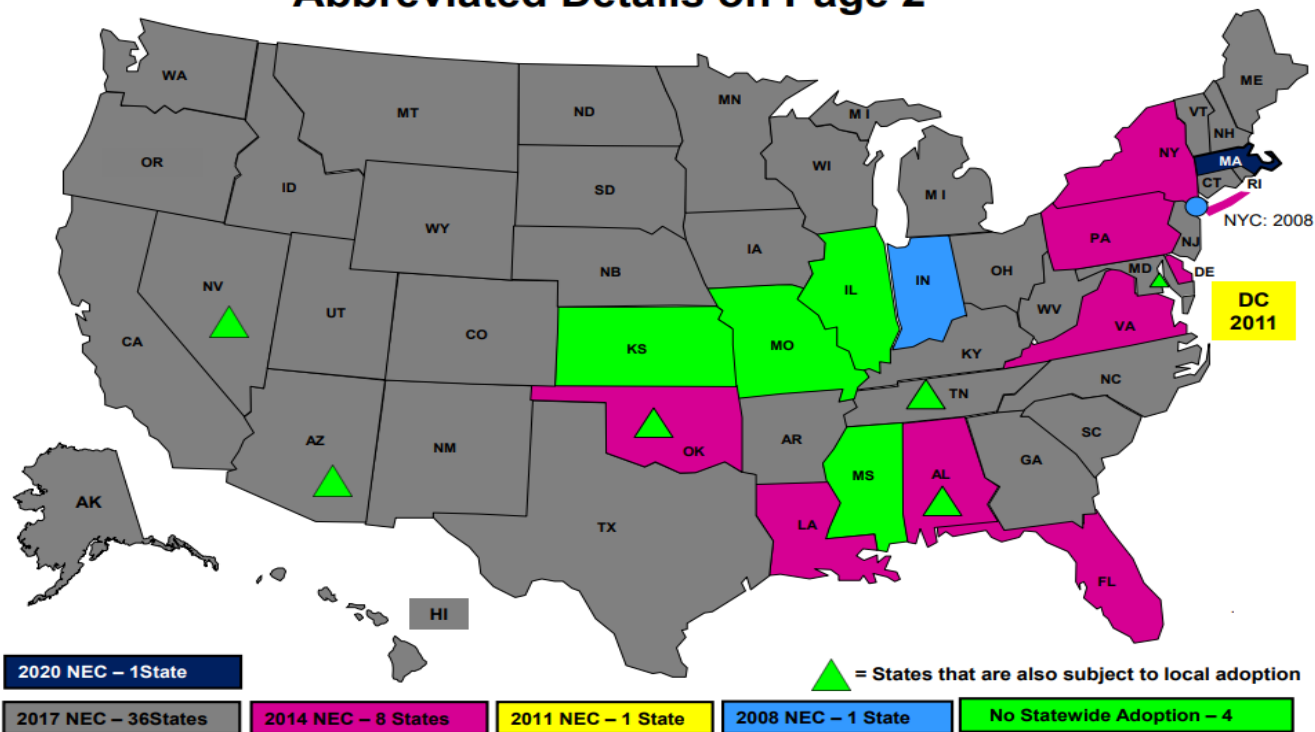
COMMERCIAL CONSTRUCTION



NEC Adoption By State

NEC Adoption by State Abbreviated Details on Page 2

Revised – April 2020



Note: Earlier editions of the NEC may be enforced in states with no statewide adoption or that are subject to local adoption.



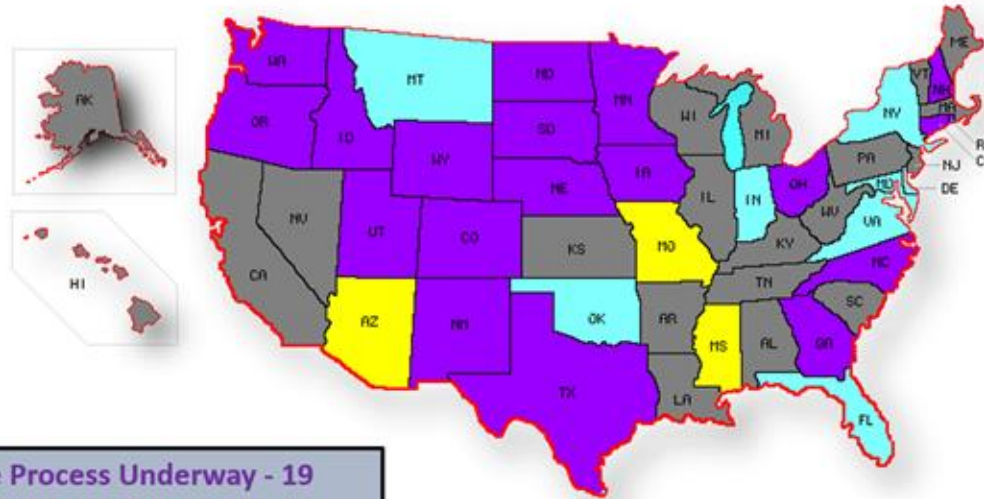
COMMERCIAL CONSTRUCTION



NEC Adoption By State – In Process

NEC® Update Process In Progress

4 /1/2020



2020 NEC® Update Process Underway - 19
2017 NEC® Update Process Underway - 8
Current Update Process Completed - 20
(See NEC® in Effect Map for Updated Edition)
County/Municipality NEC® regulation only - 3

Source: dynmap.net (4)



COMMERCIAL CONSTRUCTION



Risks to Mitigate

- Demand will gradually change
 - Codes take years to change
 - Inspectors drive enforcement
- Demand Outstrips Capacity
 - Need to forecast accordingly
 - RACO's Ceiling Fan products have longer lead times
- Competition
 - Price pressure



COMMERCIAL CONSTRUCTION



RACO's Ceiling Fan Box Lineup



- 295 / 295-1
- 4" Round
 - 1/2" Deep
 - 6 Cu. In. Cap.



- 299
- 4" Round
 - 2-1/8" Deep
 - 22.4 Cu. In. Cap.



- 296 / 296-1
- 4" Round
 - 1-1/2" Deep
 - 15.8 Cu. In. Cap.



- 294 / 294-1
- 4" Round
 - 2-1/8" Deep
 - 22.3 Cu. In. Cap.
 - New work /Old Work



COMMERCIAL CONSTRUCTION



RACO's Ceiling Fan Box Lineup (cont)



284 Gorilla Ring®

- 4" Deep
- 35 lb dynamic rated
- 49.3 Cu. In. Cap.



7120 / 7120-1

- 4" Round
- Non-Metallic
- 12.5 Cu. In. Cap.



7120VB (Vapor Barrier)

- 4" Round
- Non-Metallic
- 12.5 Cu. In. Cap.



COMMERCIAL CONSTRUCTION



RACO's Ceiling Fan Box Lineup (cont)

Adjustable between 16" and 24" Studs



926 / 926-1 Kwik-Brace®

- 4" Round
- 1-½" Deep
- 15.8 Cu. In. Cap.



936 Retro-Brace®

- 4" Round
- 1-½" Deep
- 15.8 Cu. In. Cap.



937 Retro-Brace®

- 4" Round
- 2-1/8" Deep
- 22.4 Cu. In. Cap

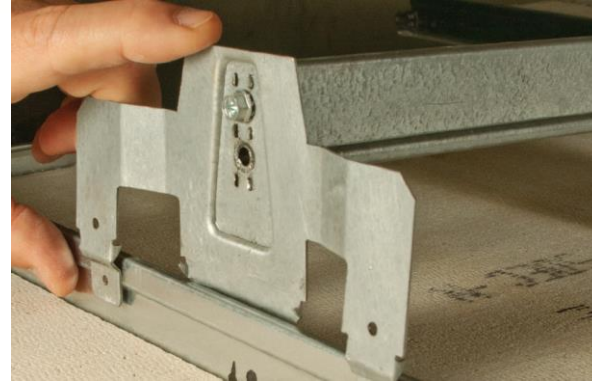


COMMERCIAL CONSTRUCTION



RACO's Ceiling Fan Box Lineup (cont)

24" Grid Span



931 GRID-BRACE®

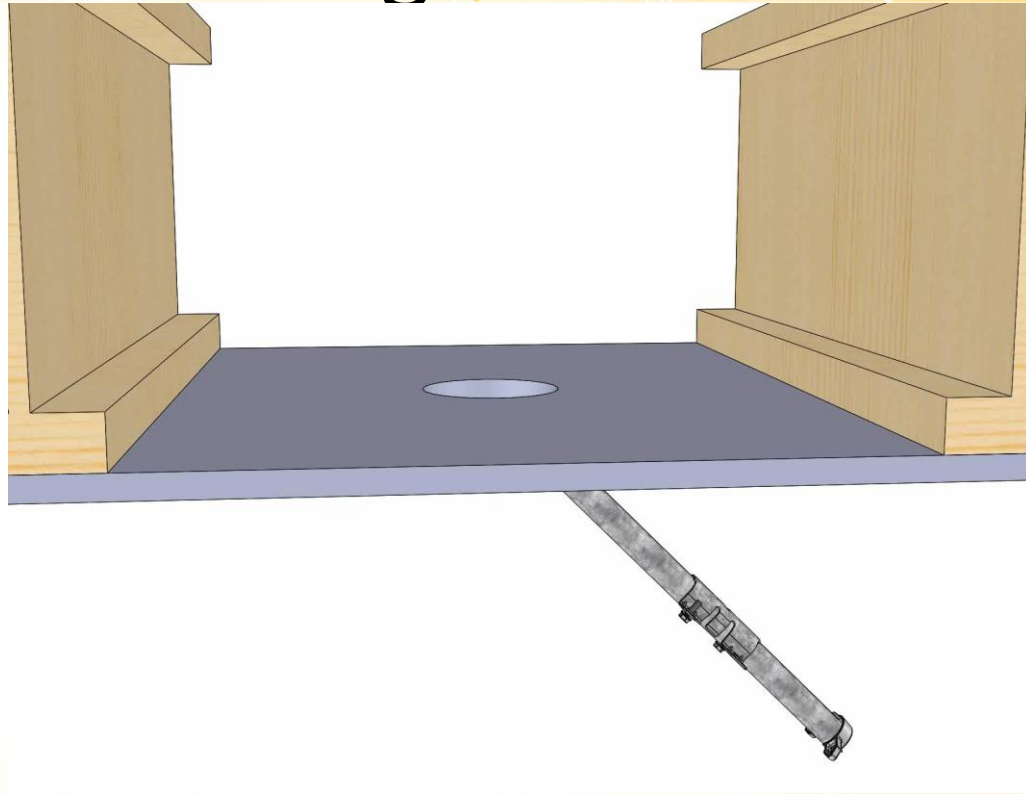
- 4" Round
- 2-1/8" Deep
- 22.3 Cu. In. Cap.



COMMERCIAL CONSTRUCTION



New 939 for Engineered Joists



Available Q3 2020



COMMERCIAL CONSTRUCTION



QUESTIONS?



COMMERCIAL CONSTRUCTION

