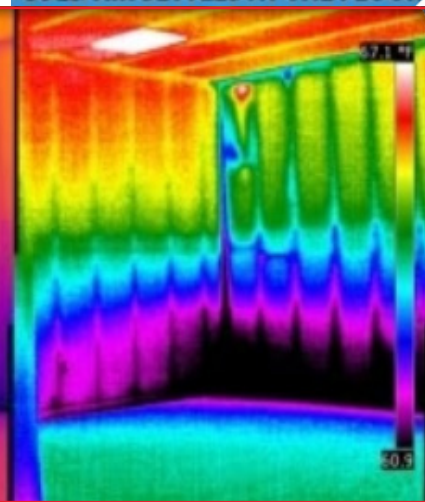
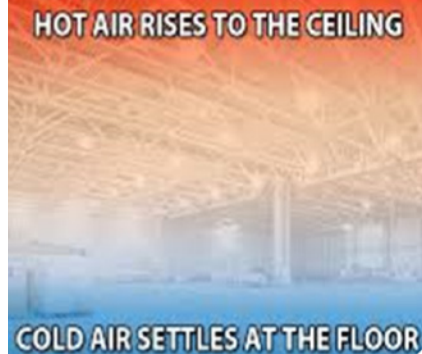


Energy Recovering Fans/ Destratification Fans

Recoverable Air

Nearly every interior space deals with some kind of air stratification or the forming of air 'layers' that are created by different temperatures of air.

Warmer air is lighter and gets pushed upward by colder, denser, heavier air. The warmest air is always found closest to the ceiling, **and it's recoverable!**

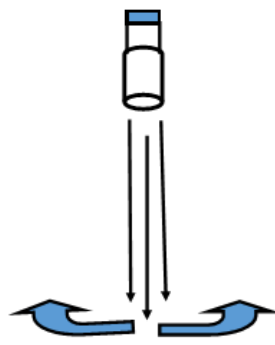
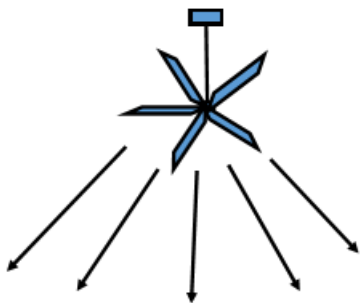


The Dollars and "Sense"

When colder air enters a space, it pushes warmer air upward. As the colder air lifts warm air past a thermostat, it sends a signal to your primary heating system to call for more warmth in the room. By utilizing the correct equipment and layout for the space, you can mix the air efficiently from floor to ceiling, saving a lot of money and providing consistent comfort from floor to ceiling for occupants.

HVLS and blade-style fans air "throw" is cone shaped. They can cover large areas and move higher volumes of air, but can also be deflected or obstructed more easily.

Positional fans, or air cannons, throw air in a much more uniform column. They're great at getting past ducts, conduits, piping, or other obstructions that would prevent them from reaching ground level. Air hits the ground and spreads linear in all directions.

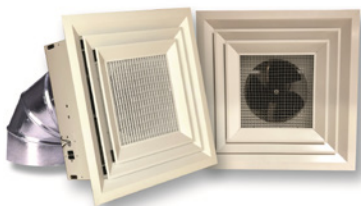




Air Row F-18

CFM: 630
Watts: 23
Voltage: 120V
Throw: 40'
Speeds: High/Low

- Great versatility
- Very efficient and easy to control
- Customizable colors, or graphics
- Ceiling or wall mount



Air Row LA-248

CFM: 805
Watts: 23
Voltage: 120V
Throw: 40'
Speeds: High/Med/ Low

- Ideal for drop ceilings and office spaces
- Very efficient and easy to control
- Duct adapter available



Envira-North Absolute Air

CFM: 80,000
Watts: 2.2kW high .3 kW low
Voltage: 208-240/1 240-480/3
Throw: 92' each direction
Speeds: High/Med/Low or VFD

- Warehouses, industrial plants, sports complexes , dairy barns
- Efficient, powerful, and great air throw



Marley/Leading Edge

CFM: 12,500-25,500
Watts: 2.2kW high .3 kW low
Voltage: 120V
Throw: 20'
Speeds: High/Low

- 36" 48" 56" 60" sizes
- 56" reversible motor



E-N Axiom

CFM: 45,000
Watts: 264 maximum with light on!
 • VSD standard control 0-120 RPM
 • 0-1980 lumen LED light & dimmer standard
Voltages: 20-277V
Coverage: 5,000 square feet
Width/Size: 7-10'
Weight: 85 pounds

- Extremely quiet operation. Contoured blade design and gear-less motor eliminate noise.
- Wall-mounted control box with on/off, speed control, light on/off, dimmer, and fan reverse. Connects to fan with simple cat5 plug-in cable.
- Very simple mounting and a great selection of color and texture options.



E-N Alite 3

CFM: 177,000
Watts: 288 for 23' fan/148 for 15' fan
 • VFD standard control 0-120 RPM
Voltages: 120-277V
Width/ Size: 23' and 15'

- 1HP/.75kW gear-less motor for incredible efficiency.
- Standard VSD for soft starts and smooth variable speed operation.
- Non-disruptive, quiet airflow from unique blade design.
- Very competitively priced.
- 3-blade design.



E-N Sailfin

CFM: 33,000-148,000
Watts: 782 to 1.5kW
Voltages: 240, 480, 600V
Width/ Size: 2, 16, 20, 24' diameters
Weight: 111-347 pounds (no bracket)

- Lifetime warranty on blades and hub.
- Very robust construction built for years of no maintenance operation.
- Standard variable speed drive with wall-mounted control box with on/off, speed control and fan reverse. Connects to fan with simple cat5 plug-in cable.
- Great overall combination of air volume and speed, variety of sizes, durability, and energy efficiency.

Contact us for a discussion or site visit regarding your application. Our product experts and vendors can create, or optimize a layout and offer correct product recommendations for your facility needs.